

T3 Duplex Apartment (Ground & 1st Floor) - 189 sqm*

*Indoor gross private area

Apartamento T3 Duplex (Piso 0 e 1) - 189 m²*

*Área bruta privativa interior

Ground Floor - Piso 0

Ground Floor

INTERIOR NET AREAS

- 01 - Living room 37 sqm
- 02 - Kitchen 11 sqm
- 03 - WC 4 sqm

EXTERIOR NET AREAS

- 04 - Garden (with swimming pool) 105 sqm

Piso 0

ÁREAS ÚTEIS INTERIORES

- 01 - Sala 37 m²
- 02 - Cozinha 11 m²
- 03 - Lavabo 4 m²

ÁREAS ÚTEIS EXTERIORES

- 04 - Jardim (com Piscina) 105 m²

1st Floor

INTERIOR NET AREAS

- 01 - Master Suite 22 sqm
- 02 - Bathroom 4 sqm
- 03 - Suite 15 sqm
- 04 - Bathroom 5 sqm
- 05 - Circulation/Stairs 21 sqm
- 06 - Suite 20 sqm
- 07 - Bathroom 5 sqm

EXTERIOR NET AREAS

- 08 - Balcony 7 sqm

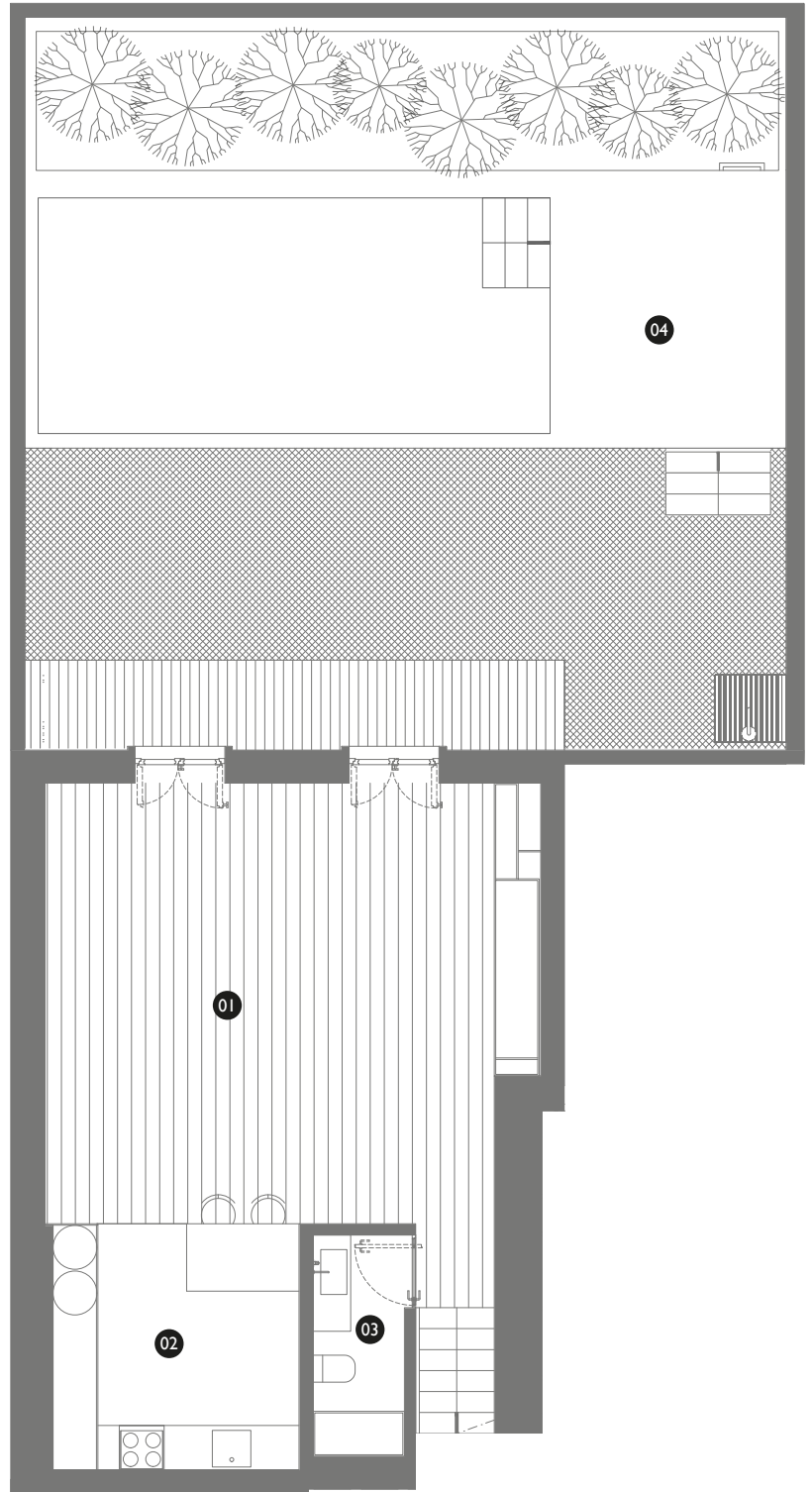
Piso 1

ÁREAS ÚTEIS INTERIORES

- 01 - Master Suite 22 m²
- 02 - Casa de banho 4 m²
- 03 - Suite 15 m²
- 04 - Casa de banho 5 m²
- 05 - Circulação/Escadas 21 m²
- 06 - Suite 20 m²
- 07 - Casa de banho 5 m²

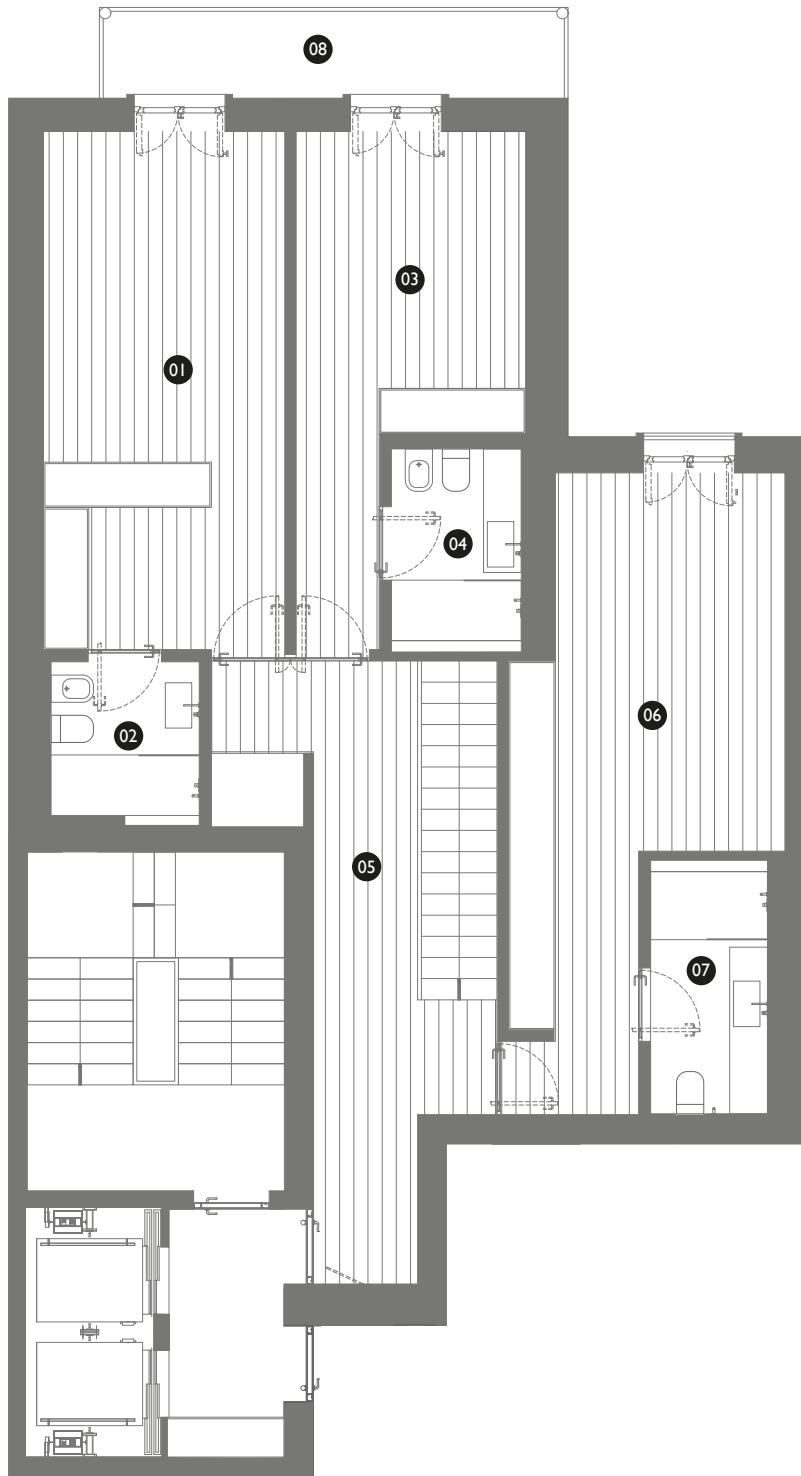
ÁREAS ÚTEIS EXTERIORES

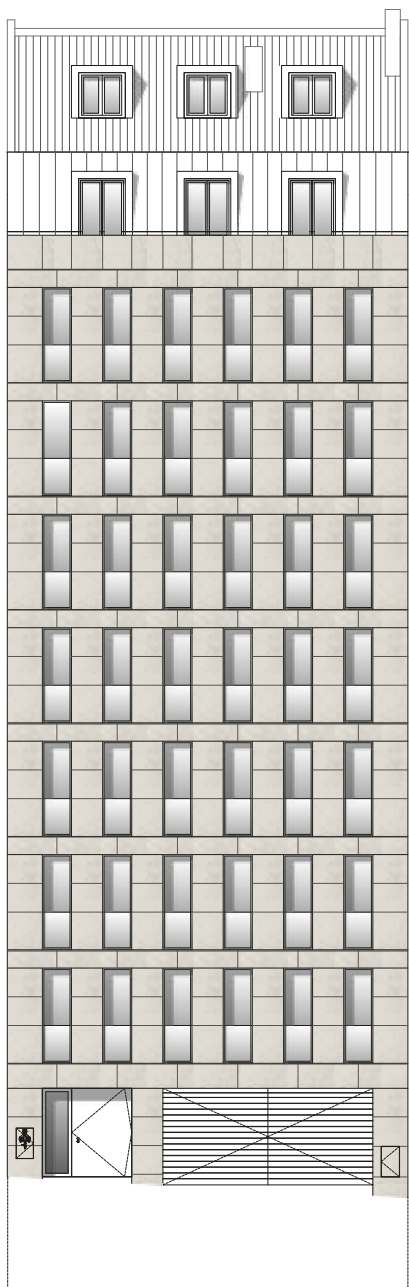
- 08 - Varanda 7 m²



| parking space (pending on the approval of the city council) | | lugar de estacionamento (dependendo de aprovação camarária)

1st Floor - Piso 1





www.excluxive.com